

BKV100 英文说明书 无LOGO

材料:105克铜版纸 单面单色印刷 风琴折切线:

折线:

110mm

正面

70mm

GPS Bike Computer User Manual

Button function

- Left Button**
Short Press: Mark a new lap
Hold for 2 seconds: Power off (Power on: short press the button)
(Short press in setting mode will return and save the setting)
- Mid Button**
Short Press: Pause / Continue (Short press to start recording after power on)
Hold for 2 seconds: save the exercise record and exit the exercise
(Short press in setting mode: enter the correct setting / switch the number of digits)
- Right Button**
Short Press: Page turning
Hold for 2 seconds: setting mode
(Short press in setting mode: switch setting options / switch the numerical value)

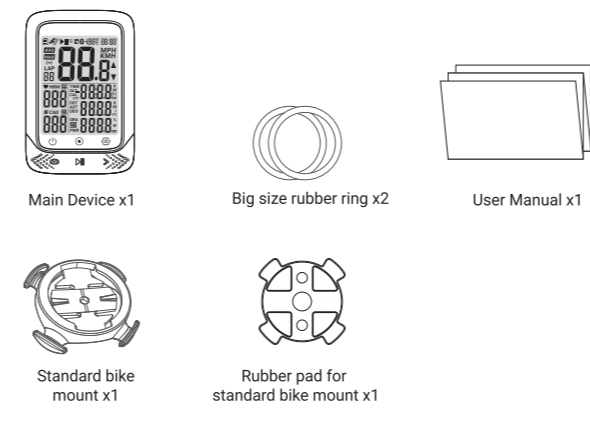


Status Icons

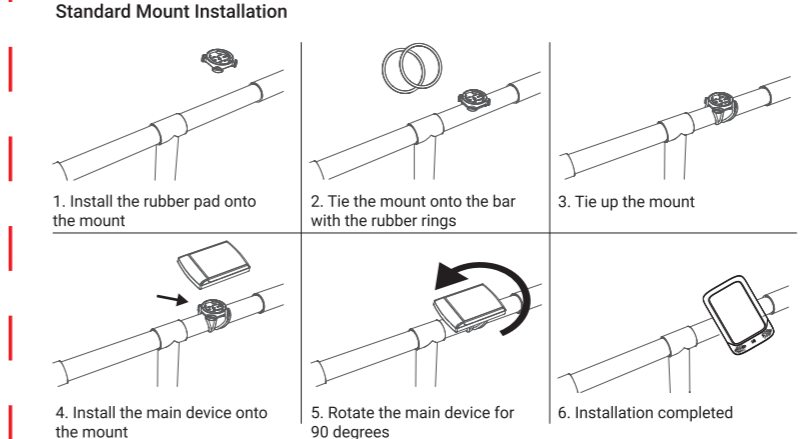
- Time
- No satellite signal
- Satellite signal level
- Accessory connecting status
- Under exercising
- Manual power
- Connected with App by BLE
- Temperature
- Battery level
- Average
- Maximum
- MPH Miles per hour
- KMH Kilometers per hour
- Increase/Decreased
- Heart Rate
- Cadence
- Gradient
- Sport time
- Altitude
- Distance (Total distance)
- Distance
- Ascend Distance
- Cadence
- LAP LAP
- Power
- Time zone



Standard accessories

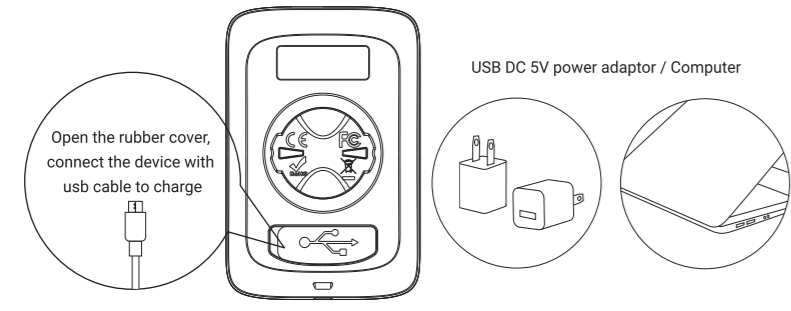


How to Install



Charging

- Please charge the device before first time use.
- Please use DC 5V power adaptor for charging.
- During the charging, the battery icon will flash until fully charged.



Acquiring Satellite Signals, Time Setting and Auto Back Light

- Auto Back Light**
This device will automatically calculate the sun rise and sun set time, from the time half an hour before sun set to half an hour after sun rise, the back light will be automatically lighted up, in the rest of the time, the back light will be turned off if no operation detected in 15 seconds.
- Acquiring Satellite Signals**
Please make sure the device is outdoor and under a clear view of sky. Usually it may take 15-90 seconds to locate satellite signals, remain stationary when acquiring satellite signals. This device can use speed sensor or GPS for speed tracking, when the speed sensor is not connected, the device will use GPS for speed tracking, and will use speed sensor when the sensor is connected.
- Time Setting**
The time and date will be calibrated automatically after locate the satellite signals when the device is powered on. (Please set the time zone correctly, refer to the time zone setting chapter) or connect the device to the App to sync the time.

Connecting with ANT+ Sensors

- Please make sure the sensors are in wake-up mode! (For example the heart rate monitor should be worn properly for speed, cadence, and power meter, rotate the crank or the wheel to wake it up.)
-

Setting the Wheel Size

- Hold the > to get into setting mode.
 - There are 5 settings pages available (P1 - P5), the first page is P1 after entering the setting mode.
 - Press **▶** to select to enter.
 - The bike computer automatically searches for ANT+ accessories, and automatically connects after searching for ANT+ accessories.
 - Press **▶** to save the found accessories and return. If no ANT+ accessory is found, the device will return to the last pages automatically. (When the power device is connected during riding, the computer will display power data first, and when there is no power device, it will display GSA slope data.)
-

Setting the Wheel Size

- Hold the > to get into setting mode.
 - There are 5 settings pages available (P1 - P5), press the > to switch to P2.
 - Press **▶** to select to enter.
 - Press **▶** to select the setting digit, press the > to set the number.
 - Press **▶** to save and exit (Automatically exit in 6 seconds if no operation detected).
-

反面

Common wheel size and circumference (Wheel Size L (mm))			
12 x 1.75 575mm	24 x 1.75 1875mm	26 x 1.5 2061mm	650 x 35A 2000mm
14 x 1.5 1020mm	24 x 2.00 1925mm	26 x 1.12 2100mm	650 x 38A 2125mm
16 x 1.75 1055mm	24 x 2.125 1965mm	26 x 1.40 2005mm	650 x 38B 2105mm
16 x 1.1 1185mm	26 x 1.75 2022mm	26 x 1.40 2010mm	700 x 18C 2070mm
16 x 1.75 1195mm	26 x 1.95 2050mm	27 x 1.21 45mm	700 x 19C 2080mm
18 x 1.5 1345mm	26 x 2.00 2050mm	27 x 1.12 2150mm	700 x 20C 2090mm
18 x 1.75 1395mm	26 x 2.12 2040mm	27 x 1.14 2165mm	700 x 20C 2090mm
20 x 1.75 1515mm	26 x 2.125 2070mm	27 x 1.3 2169mm	700 x 25C 2105mm
20 x 1.5 1615mm	26 x 2.35 2082mm	27 x 1.75 2146mm	700 x 28C 2136mm
22 x 1.5 1775mm	26 x 3.00 2170mm	27 x 5/2 125 2174mm	700 x 30C 2170mm
22 x 1.12 1785mm	26 x 2.8 1920mm	27 x 1.5 2074mm	700 x 32C 2195mm
24 x 1.1 1935mm	26 x 1.95 1913mm	27 x 1.95 2146mm	700C 36A 2136mm
24 x 1.4 1975mm	26 x 1.65 1955mm	29 x 2.1 2289mm	700 x 35C 2168mm
24 x 1.1 1755mm	26 x 1.25 1955mm	29 x 2.2 2298mm	700 x 38C 2180mm
24 x 1.1 1920mm	26 x 1.18 1970mm	29 x 2.3 2324mm	700 x 40C 2200mm

- ### Time Zone Setting
- Hold the > to get into setting mode.
 - There are 5 settings pages available (P1 - P5), press the > to switch to P3.
 - Press **▶** to select to enter (Default time zone: UTC/GMT + 08:00).
 - Press **▶** to select the setting digit, press the > to set the number.
 - Press **▶** to save and exit (Automatically exit in 6 seconds if no operation detected).
-

- ### Setting Metric and Imperial Units
- Hold the > to get into setting mode.
 - There are 5 settings pages available (P1 - P5), press the > to switch to P4.
 - Press **▶** to select metric system (KM/H) or imperial system (MPH) (default is metric system).
 - Press **▶** to save and exit (Automatically exit in 6 seconds if no operation detected).
-

- ### Power Calibration
- Hold the > to get into setting mode.
 - There are 5 settings pages available (P1 - P5), press the > to switch to P5, it will automatically calibrate.
 - Short press **▶** to recalibrate, the value flashes during the calibration, the value does not flash after the calibration is successful.
 - After the calibration is successful, press **▶** to save and exit (Automatically exit in 20 seconds if no operation detected).
-

- ### Cycling
- Turn on the device, press **▶** to start an exercise and recording. (During the cycling, when the cycling speed is 0, the device will pause automatically, if no data get for speed, cadence and heart rate in 15 minutes the device will turn into sleep mode, press **▶** to resume.)
-

- ### GPS Positioning Anomaly
- GPS searching is Auto after power on. Please start cycling after the GPS positioning is successful.
 - If you start riding when the GPS is not positioned successfully (speed sensor not connected), the speed data (real-time, average, maximum) will be displayed as " * ", and the rest of the data remains the same.
- Tips: You can stand still 3-5 minutes to get more connections with satellites for better GPS signal.
- NO signal
 - Weak signal
 - Normal signal
 - Strong signal
-
- Note: Please make sure you are outdoor when positioning. Bad weather and dense forest may affect GPS signal.

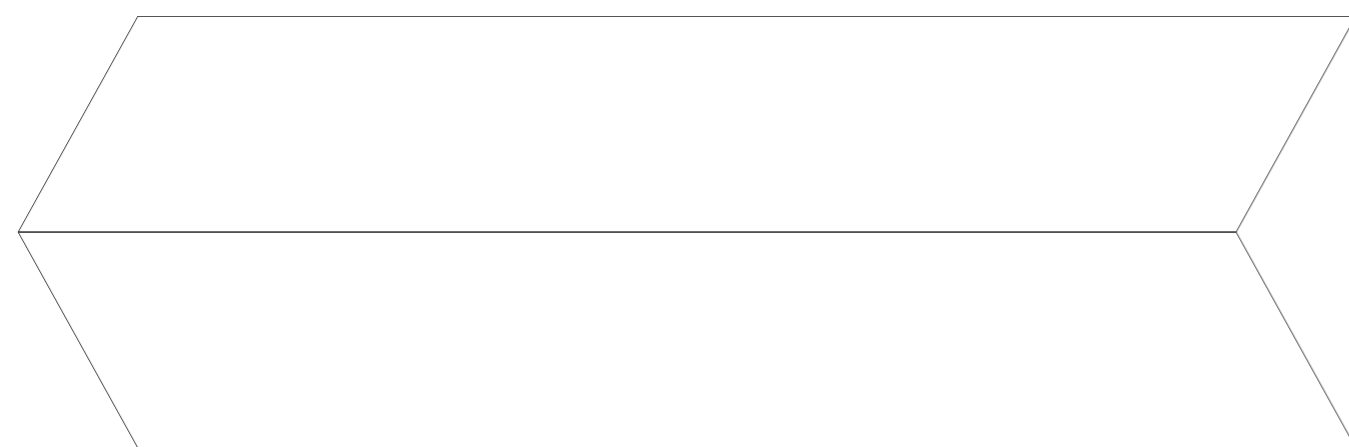
- ### * Bluetooth Connection
- Download OneBiker in Google Play or App Store.
-
- Compatible with:
- iOS 9.0 version and above, iPhone 4s and above
 - Any Bluetooth 4.0 enabled Android device with Android 4.3 and above

- Power on the bike computer.
 - Open the OneBiker App, enter the binding bike computer step, select the BKV100 bike computer in the device list to bind the device, (the phone needs to turn on Bluetooth and allow Bluetooth permissions).
 - Bind
-

- In the activity page of the App, click on the connected device to enter the record synchronization operation page (through the authorization to Strava in the App more settings, the bike computer data can be synchronized to the Strava platform at the same time).
 - Select the record to be synchronized and click **▶** Sync, and the record on the bike computer will be deleted automatically after synchronization.
 - Sync
-

- ### Basic Parameters
- Wireless: ANT+ BLE
 - Display: FSTN Screen, 2.3 inch
 - Back Light: Yes
 - Locate Mode: GPS & BOS
 - Lap Count: Yes
 - Storage Format: fit
 - Water Resistance: IPX7
 - Weight: 68g
- ### Language
- English
 - Battery Capacity: 1000mAh
 - Battery Life: 27 hours for a single use after fully charged
 - Material: PC+ABS+TPU
 - Dimension: 81x54x21.4 mm
 - Accessories Supported: ANT+ peripherals (Heart Rate Monitor, Speed Sensor, Cadence Sensor, Speed and Cadence 2 in 1 Sensor, Power Meter)
 - File Transfer: Bluetooth (Specified App Compatible)
- ### Attention
- The water resistant level of the bicycle computer is IPX7. It can be used in the rain if you close the protective cover on the back tightly. It is recommended to take down the bicycle computer and put it into waterproof bag if it rains heavily.
- ### Responsibility Disclaimer
- The information contained in this manual just for reference. The product described above may be subject to alteration owing to the manufacturer's continuing research and development plans, without making an announcement in advance.
 - We shall not bare any legal responsibility for any direct or indirect, accidental or special damages, losses and expenses arising from or in connection with this manual or the contained product.

风琴折, 第一步



风琴折, 第二步

